



Production of *Daphnia* zooplankton on wastewater-grown algae for sustainable conversion of waste nutrients to fish feed

Miriam Hyman^a, Qichen Wang^b, Alan E. Wilson^c, Sushil Adhikari^b, Brendan T. Higgins^{b,*}

^a Department of Biology, Kenyon College, Gambier, OH, 43022, USA

^b Biosystems Engineering, Auburn University, Auburn, AL, 36849, USA

^c School of Fisheries, Aquaculture, and Aquatic Sciences, Auburn University, Auburn, AL, 36849, USA

ARTICLE INFO

Handling editor: Prof. Jiri Jaromir Klemes

Keywords:

Anaerobic digestate

Nutrition

Phytoplankton

Trophic transfer

ABSTRACT

This study investigates the upcycling of nutrients in anaerobic digestate via algal biomass to zooplankton which is a natural fish feed. There are no published studies, to the authors' knowledge, on the viability of growing zooplankton on digestate-grown algae. Here, the viability of digestate-grown *Chlorella sorokiniana* as a feed for the large-bodied generalist zooplankton, *Daphnia*, was tested. It was found that *Daphnia* fed with digestate-grown *C. sorokiniana* led to 1.5- to 14-fold greater *Daphnia* population growth than *Daphnia* fed with *Ankistrodesmus* sp., an established feed. A sterol analysis of *C. sorokiniana* found 4–6 mg/g of the sterol, ergosterol, and nearly double the α -linolenic acid content of *Ankistrodesmus*. Sterols and α -linolenic acid are often-limiting nutrients in *Daphnia* diets. Other factors hypothesized to influence nutrient transfer from algae to *Daphnia* were also tested, including algal feed concentration, sterol supplementation, and the presence of digestate bacteria in the algal feed. The presence of bacteria and exogenous cholesterol had no significant impacts on *Daphnia* growth. The higher feed concentration (5 mg C/L) led to 3 times higher *Daphnia* growth than the low feed concentration (1.5 mg C/L) even though the latter concentration has frequently been used by other researchers. Finally, it was determined that the feed conversion ratio of algae to *Daphnia* fell in the range of 0.19–0.31 and that trophic transfer of carbon was 25–28% while that of nitrogen was 29–34% in this un-optimized system. These values compare favorably to livestock feed conversion efficiency but additional losses will occur when *Daphnia* are fed to fish. These results show that cultivation of *Daphnia* on digestate-grown algae is technically feasible.

1. Introduction

When disposed of improperly, high nutrient waste is a pollutant, spurring eutrophication and harmful algal blooms (Glibert, 2017; Mallin and Cahoon, 2003). The environmental costs of inadequately-treated waste are often economically expensive as well, threatening the fishing industry, tourism, and human health (Ger et al., 2016). Research suggests algal cultivation on high nutrient waste may be a sustainable method of wastewater treatment because algae can assimilate inorganic nutrients efficiently and their biomass can be harnessed for commercial purposes (Cho et al., 2013; Heredia Falconí et al., 2021; Herrera et al., 2021). For example, researchers have cultivated algal biomass on wastewater for the production of biofuels (Salama et al., 2017), however, harnessing algal biomass for cultivation of zooplankton fish feed is potentially more lucrative. Where algal biofuels suffer from low selling prices (Davis et al., 2011; Quinn and Davis, 2015), high-protein fish

meal has, over the past five years, fluctuated between \$1300–\$1600 per metric ton (WorldBank, 2020). Upgrading wastewater nutrients to zooplankton also directly reintegrates nutrients, such as nitrogen and phosphorus, back into the food production system.

Use of algae to treat anaerobic digestates has gained particular attention given the potential for rapid algal growth and nutrient removal from diluted anaerobic digestates (Bohutskyi et al., 2016; Fuldauer et al., 2018; Passero et al., 2015). However, use of high-strength anaerobic digestates without any dilution can be toxic to algae. Many researchers have diluted the anaerobic digestate 10–30 fold with water to mitigate its toxicity to algae (Cho et al., 2013; Franchino et al., 2016). The authors recently developed a pretreatment method using aerobic bacteria instead of dilution to reduce algal growth inhibition on digestate (Wang et al., 2019b). In fact, this approach yields more rapid algal growth than the dilution approach while eliminating the need for large volumes of dilution water.

* Corresponding author. Department of Biosystems Engineering, 203 Corley Building, Auburn, AL, 36849, USA.

E-mail address: bth0023@auburn.edu (B.T. Higgins).

<https://doi.org/10.1016/j.jclepro.2021.127501>

Received 5 January 2021; Received in revised form 6 May 2021; Accepted 11 May 2021

Available online 14 May 2021

0959-6526/© 2021 Elsevier Ltd. All rights reserved.

High transfer efficiencies of wastewater nutrients to algae, and efficient trophic transfer from algae to zooplankton is of great importance to commercialization of this feed production process. High efficiency lowers production costs and reduces resource inputs. A recent study showed that *Chlorella sorokiniana* was well-adapted to growth on pretreated municipal sludge anaerobic digestate (Wang et al., 2021). However, there is no published research on the technical viability of feeding zooplankton with algae that was grown on digestate.

The zooplankton *Daphnia* is a commercial fish feed and these organisms exhibit a very high feed conversion efficiency (Pauw et al., 1981). *Daphnia* are also model organisms frequently used to assess aquatic toxicity (Nikunen and Miettinen, 1985) making them an appropriate model organism to test the feed-value of algae grown on wastewater. That said, *Daphnia* also exhibit impressive natural variation and resilience to a range of algal feeds, including toxic cyanobacteria (Chislock et al., 2013a, 2013b; Tillmanns et al., 2008).

The trophic transfer of nutrients from algae to *Daphnia* has been tied to both feed abundance and nutritional quality (Taipale et al., 2014). Studies have shown suppression of reproduction and somatic growth in *Daphnia* that are fed algae lacking in certain fatty acids and sterols, which *Daphnia* are unable to synthesize de-novo (Elert et al., 2003; Koch et al., 2012). Prior research suggests that eicosapentaenoic acid (EPA) is the primary limiting polyunsaturated fatty acid (PUFA) for somatic growth and reproduction of *Daphnia* (Becker and Boersma, 2005; Martin-Creuzburg and von Elert, 2009; Müller-Navarra et al., 2004). α -linolenic acid (ALA) has also been identified as a non-substitutable fatty acid because *Daphnia* cannot synthesize ALA but can convert ALA to EPA (Becker and Boersma, 2005; Martin-Creuzburg and von Elert, 2009; Müller-Navarra et al., 2004; von Elert, 2002). Cholesterol, which is required for membrane stabilization, is also necessary for growth and reproduction (Hassett, 2004). *Chlorella sorokiniana*, an algae strain identified in previous research to be well-adapted to growth on pretreated digestate, was rich in protein and some omega3 fatty acids, and therefore showed promise as a feedstock for zooplankton-based fish feed (Wang et al., 2021). However, the technical viability of cultivating *Daphnia* zooplankton on digestate-grown algae is unknown. Moreover, factors (e.g., sterol abundance, feeding rate) that impact *Daphnia* growth on digestate-grown algae are also unknown.

The objective of this study was to test the hypothesis that *Chlorella sorokiniana* grown on pretreated anaerobic digestate is a viable feed for the model zooplankton *Daphnia*. *Daphnia* population growth was compared between organisms fed a standard algae-based feed, *Ankistrodesmus*, and those fed *Chlorella sorokiniana* cultivated on digestate. The impact of wastewater bacteria (from digestate pretreatment) mixed into the algae feed was also tested on *Daphnia*. The second objective was to determine whether *Daphnia* growth could be increased by manipulating factors including feed abundance and sterol supplementation. It was hypothesized that *Daphnia* would benefit from the high omega3 fatty acid content produced by *C. sorokiniana* under high-nutrient conditions as documented in Wang et al. (2021), and that *Daphnia* growth could be further enhanced through exogenous sterol addition. This study fills key knowledge gaps with regard to the feasibility of and factors affecting the efficiency of *Daphnia* cultivation on digestate-grown algae. The findings of this study lay the groundwork for a novel, scalable and cost-effective method for upcycling anaerobic digestate nutrients into fish feed.

2. Material and methods

2.1. Experimental conditions

Daphnia population growth experiments were conducted to measure the growth and trophic transfer efficiency of *Daphnia* that were fed algae cultivated on pretreated municipal anaerobic digestate. In the experimental treatments, *Daphnia* were fed the chlorophyte, *Chlorella sorokiniana* (UTEX 2805). *C. sorokiniana* feed was grown on two different

batches of pretreated municipal sludge anaerobic digestate. In the first batch, *C. sorokiniana* were cultured on a low-strength municipal anaerobic digestate (~400 mg/L ammonium). In the second batch, *C. sorokiniana* were cultured on a higher strength municipal anaerobic digestate (~1400 mg/L ammonium). These differences in strength are due to the natural temporal variation in digestate collected from the wastewater treatment plant in Columbus, GA. These digestates and the algae cultivation methods have been described in detail in a previous publication (Wang et al., 2021).

Two batch growth experiments (17–20 days) were conducted with *Daphnia* fed *C. sorokiniana* that were cultivated on low and high strength pretreated digestate, respectively. Each experiment tested six experimental conditions to investigate factors hypothesized to influence nutrient transfer from algae to *Daphnia*: algae type, algae feed concentration, sterol supplementation, and presence of bacteria from the pretreated digestate (Table 1). This experiment was conducted first with *C. sorokiniana* grown on low-strength anaerobic digestate (experiment 1) and then subsequently with *C. sorokiniana* grown on high-strength anaerobic digestate (experiment 2). *Ankistrodesmus* sp. was used as the feed for the control group. While previous study showed that *C. sorokiniana* grown on pretreated anaerobic digestate was rich in fatty acids, it had no precedent as a *Daphnia* feed. Conversely, the green algae *Ankistrodesmus* is an established *Daphnia* feed, with a growth-saturating concentration of 1.5 mg C/L for juvenile *Daphnia* (DeMott et al., 2010; Lampert, 1978; Sarnelle and Wilson, 2005). Thus, *Daphnia* were fed *Ankistrodesmus* in one of the treatments as a positive control. The effects of algae feed containing residual wastewater bacteria was also tested since this is likely to occur in a full-scale system. *Daphnia* were therefore fed with *C. sorokiniana* grown on sterile-filtered (0.2 μ m) anaerobic digestate (no bacteria) whereas the remaining treatments received *Chlorella sorokiniana* grown on nonsterile anaerobic digestate (containing bacteria). The established feed concentration of 1.5 mg C/L (FR1.5) was held constant for the control and for three of the five experimental conditions. To test whether growth and trophic transfer efficiency could be increased by higher feed rates, two *Daphnia* cultivation conditions received a high feed concentration of 5 mg C/L (FR5). Informed by a prior study suggesting cholesterol supplementation increased egg production in copepods (Hassett, 2004), it was hypothesized that sterol supplementation might also facilitate *Daphnia* population growth. A treatment of *Daphnia* at the standard and high feed rates were supplemented weekly with 10 μ g of cholesterol (+Chol) which was the same concentration used in the study by Hassett (2004).

Because cholesterol is insoluble in water, cholesterol aliquots were made using the protocols described by Hassett (2004) by homogenizing increasing dilutions of cholesterol in a beadbeater (OMNI) twice for 30 s at a speed of 8 m/s. Homogenized aliquots were stored in a -20 °C freezer and rehomogenized with the beadbeater before supplementation at 10 μ g/L.

Table 1
Experimental treatments^a for *Daphnia* cultures.

Treatment abbreviation	Feed type	Algal growth medium	Feed concentration	Cholesterol Supplement
Ank FR1.5	<i>Ankistrodesmus</i>	BG11	1.5 mg C/L	None
Ax C. Sor (FR1.5)	<i>Chlorella sorokiniana</i>	Sterile-filtered digestate	1.5 mg C/L	None
C. Sor (FR1.5)	<i>C. sorokiniana</i>	Digestate	1.5 mg C/L	None
C. Sor (FR1.5) + Chol	<i>C. sorokiniana</i>	Digestate	1.5 mg C/L	10 μ g/L
C. Sor (FR5)	<i>C. sorokiniana</i>	Digestate	5.0 mg C/L	None
C. Sor (FR5) + Chol	<i>C. sorokiniana</i>	Digestate	5.0 mg C/L	10 μ g/L

^a All experimental treatments were conducted in biological triplicate.

2.2. Feed preparation

The chlorophyte, *C. sorokiniana* (UTEX 2805), was originally isolated from a wastewater treatment plant (de-Bashan et al., 2008). As detailed in the methods from Wang et al. (2021), *C. sorokiniana* was cultured on sterile and nonsterile municipal sludge anaerobic digestate that had been pretreated with aerobic bacteria (activated sludge) for 96 h. The digestates were collected from a mesophilic anaerobic sludge digester at the South Columbus Water Resources Facility (Columbus, GA, USA). Activated sludge bacteria were collected from the aeration basins in this same facility and used for the digestate pretreatment process. Sterile digestate was prepared by filtration down to 0.2 µm whereas non-sterile digestates were filtered to 0.7 µm. *Ankistrodesmus* was maintained in 1 L bottles filled with BG11 medium. *C. sorokiniana* was cultured in 200 ml bubble column photobioreactors as previously described (Wang et al., 2019a). All algal cultures were maintained at room temperature and provided with 0.5 vvm of air supplemented with 2% CO₂. Fluorescent growth lamps (170 mmol photons/m²/s) were operated on a 16:8 light/dark cycle. After five days of cultivation, algal cultures were harvested by centrifugation at 4696×g for 5 min and the supernatant was decanted. The algal pellet was washed twice with dH₂O and resuspended in filtered (~1 µm) water obtained from an oligotrophic lake in Alabama (Lake Martin) to achieve a concentration of 1 mg of dry weight algae per ml. This stock algae feed was stored at 4 °C and used over the course of the *Daphnia* feeding study. All cultures were handled in a biosafety cabinet using sterile technique to prevent contamination with laboratory organisms.

2.3. *Daphnia* culture conditions and sampling

All experiments were conducted with *Daphnia* clones isolated from a eutrophic lake. At the start of the batch experiment, 10 *Daphnia* were introduced into each bottle filled with 250 mL autoclaved and filtered (~1 µm) lake water. Algae and cholesterol were added to bottles per the experimental design (Table 1). Bottles were kept at room temperature (~25 °C) under ambient room lighting. *Daphnia* populations in each bottle were counted daily before sampling through careful observation. When *Daphnia* populations were above 30, counts were taken multiple times and averaged. Counts were verified by multiple counters. In the second experiment (using *C. sorokiniana* grown on high-strength digestate), the number of ovigerous *Daphnia* were also recorded daily. Every other day, the bottles were swirled to resuspend the algal feed and 10 ml samples were taken from each replicate by serological pipette, with care not to remove any *Daphnia* from the populations. The samples were used to measure pH, ion content, and optical density of each replicate. Optical density of each sample was measured at 680 nm with a spectrophotometer (SpectraMax M2) using cuvettes. The samples were measured in technical triplicates and averaged. Using a regression of optical density and feed concentration specific to the algal species, the optical density of the samples was used to calculate the feed amount required for each replicate to maintain the feed concentration of each treatment at either 1.5 or 5 mg C/L. The carbon content of *Ankistrodesmus* sp. and *C. sorokiniana* were 44% and 46% on a dry weight basis, respectively, according to CHNS analysis using a vario MICRO cube Elemental Analyzer (Elementar). Nitrogen content was 7.0% and 7.8% for *Ankistrodesmus* sp. and *C. sorokiniana*, respectively. After feeding, each bottle was replenished to 250 ml as needed with autoclaved lake water. After 17–19 days, *Daphnia* were harvested from each bottle using a sieve and freeze dried. The *Daphnia* wet and dry weights were recorded to calculate biomass. The freeze-dried samples underwent elemental analysis (CHNS).

2.4. Fatty acid analysis in algae

Gas chromatography and mass spectrometry was used to determine the concentration of omega3 fatty acids in the algae feeds. The fatty acid

profile of the *C. sorokiniana* biomass was reported previously (Wang et al., 2021), but the same analysis was carried out in this study for the *Ankistrodesmus* feed material. Lipids were extracted from freeze-dried algae using a modified Folch method as previously described (Wang et al., 2019a). Lipid extracts were dried and transesterified with 1 M methanolic HCl and analyzed by gas chromatography and mass spectrometry (GC-MS) using methods previously described (Higgins et al., 2014) with modifications. Nonadecanoic acid was added to lipid extracts as an internal standard. Samples were injected into an HP 6890 GC coupled to an HP 5970 mass spectrometer. A Restek RXI-5Sil MS column (Length: 30 m, ID: 0.25 mm, d_f: 0.25 µm) was used for separation with the following oven temperature program: Initial Temperature: 100 °C, 2 min; ramp to 240 °C in 10 min (rate: 14 °C/min); hold at 240 °C for 47 min. Helium was used as the carrier gas with a flow of 6.4 ml/min and a split ratio of 8:1 (0.8 ml/min on column). Peaks were integrated using the ChemStation software and concentrations of individual fatty acids were determined from the internal standard plus recovery factors obtained from an analytical canola oil external standard (Sigma). Peak area response for a range of FAMES were also determined using a mixture of FAME standards (Sigma). The following equation was used to calculate unknown fatty acid concentrations in samples:

$$C_x = A_x \left(\frac{C_{IS}}{A_{IS}} \right) \left(C_{RS} \left(\frac{A_{RS}}{C_{VF_{IS}}} \right) \left(\frac{RF_B}{RF_x} \right) \right) \quad (1)$$

Where C is the concentration, A is the integrated peak area, CvF is conversion factor of concentration/area, RF is the response factor or slope of concentration to area. The subscript X represents the unknown fatty acid, the IS subscript represents the internal standard, and the RS subscript is the recovery standard and B is a benchmark fatty acid (18–2 n6). This method accounts for varying responses and recoverability of the different fatty acids in the mixture.

2.5. Sterol analysis by liquid chromatography with mass spectrometry

Cholesterol was measured in the algal lipid extracts by LCMS using a method adapted from Nagy et al. (2006). Cholesterol analysis was conducted on a Shimadzu Prominence UPLC coupled to a Shimadzu LCMS2020 single quadrupole mass spectrometer. An Accucore RPMS (C18), 2 × 100 mm column was used. 85:15 v/v MeOH/water was used for phase A and isopropyl alcohol was used for phase B under a flow rate of 0.3 ml/min. The HPLC gradient was as follows: 0–10 min ramp 0%–90% B, 10–12 min hold 90% B, 12–13 min ramp 90%–0% B, 13–17 min hold 0% B. MS detection parameters were as follows: Positive mode, DUIS with 4 µA current, and Scan mode from 100 to 1000 m/z per second. Standards of cholesterol (RT, 7.2 min and quantification m/z, 369) and ergosterol (RT, 6.7 min and quantification m/z, 379) were used for quantification. For both sterols, the dominant positive ion was a molecular fragment representing the loss of the negatively charged OH group. The parent ion with an H⁺ adduct was also observed for both of these sterols but this ion was weaker and was not used for quantitation.

2.6. Elemental mass balance and trophic transfer

Trophic transfer efficiency was determined by calculating the feed conversion ratio (FCR) alongside C and N transfer rates from algae to *Daphnia*. FCR was calculated as the ratio of the total amount of algae fed (dry weight basis) divided by the wet weight of *Daphnia* harvested from each treatment. The carbon and nitrogen content of the algae and *Daphnia* were measured using a CHNS elemental analyzer. Due to instrument malfunction part way through the run, total nitrogen assays (HACH) were used to re-analyze nitrogen content of the algal biomass in a subset of the samples. This method has been described previously (Wang et al., 2021).

To complete the mass balance on nitrogen, the nitrogen ion concentrations in the water samples including ammonium, nitrate, and

nitrite, were measured. Ion concentrations were measured on a Prominence Liquid Chromatography (LC) system coupled with a conductivity detector (Shimadzu, Japan). Measured ions also included sodium, potassium, calcium, magnesium, chloride, phosphate, and sulfate, based on a published method (Chaump et al., 2018). Briefly, A Dionex IonPac CS12 column (4 × 250 mm, Thermo science) and a Dionex IonPac AS22 column (4 × 250 mm) with suppression (Dionex CERS 500 4 mm and Dionex AERS 500 4 mm, respectively) were used for ion separation. Acidic eluent (20 mM methanesulfonic acid) was used on the CS12 column, and basic eluent (4.5 mM sodium carbonate and 1.4 mM sodium bicarbonate solution) was used on the AS22 column.

2.7. Data analysis and statistics

Experiments were all conducted in biological triplicate. For non-time course data, statistical one-way ANOVA of treatments and two-way ANOVA for experimental variables (feed rate, cholesterol, bacteria, algae type), were carried out in R with the 'lattice' package and 'multcomp' package and followed by Tukey's HSD test with $p < 0.05$ considered significant. For time-course data associated with the *Daphnia* growth curve, a repeated measures ANOVA of treatments coupled with Tukey's HSD test was used. Means and standard deviations were calculated in Microsoft Excel.

3. Results

3.1. *Daphnia* growth

Daphnia populations grew as well or better on the wastewater-grown *C. sorokiniana* than they did on the standard feed algae, *Ankistrodesmus* sp. (Fig. 1). Final *Daphnia* counts at the end of the batch experiments were 1.5–14 times higher in the experimental diets compared to the control diet (*Ankistrodesmus* sp.), regardless of whether the *C. sorokiniana* feed was cultivated on low strength or high strength digestate. There was also no significant difference between treatments fed with *C. sorokiniana* grown on sterile filtered digestate versus algae that contained wastewater bacteria. Treatments maintained with a high feed concentration of 5 mg C/L of *C. sorokiniana* had faster rates of *Daphnia* population growth than treatments maintained at 1.5 mg C/L of *C. sorokiniana* ($p < 0.001$, Fig. 1). In the first experiment, where *C. sorokiniana* were cultivated on low strength digestate, the peak population of *Daphnia* fed 5 mg C/L of *C. sorokiniana* was three times larger than the treatment fed 1.5 mg C/L and fourteen times larger than those fed with *Ankistrodesmus* sp. (Fig. 1A). The second experiment, where *C. sorokiniana* were cultivated on high strength digestate, showed similar trends: the high feed treatment had a peak population five times larger than the standard feed treatment of *C. sorokiniana*, and twelve times larger than the *Ankistrodesmus* control (Fig. 1 B). Nitrite and nitrate levels in the *Daphnia* cultures (potential metabolic waste products) remained steady throughout the experiment despite the increases in population density (Figs. S1 and S2). Ammonium concentrations increased and scaled with population size (Fig. S3). Increases in ammonium may have influenced some of the population decline observed after day fifteen of the second experiment, although concentrations remained below acute toxicity levels for *Daphnia* (EPA, 2013).

Addition of cholesterol to the *Daphnia* cultures appeared to have a small suppressive effect on growth but the effect was not statistically significant (Fig. 1, $p = 0.055$). A count of ovigerous *Daphnia* taken during the second experiment suggested possible differences in reproductive timing for treatments supplemented with cholesterol, however. Within treatments of the same feed rate, those supplemented with cholesterol appeared to have less *Daphnia* carrying eggs during the first half of the experiment (Fig. S4).

On the 9th day of *Daphnia* growth in the first experiment, there was an air conditioning failure in the building. This heat shock led to increased room temperature of 27–32 °C under high humidity

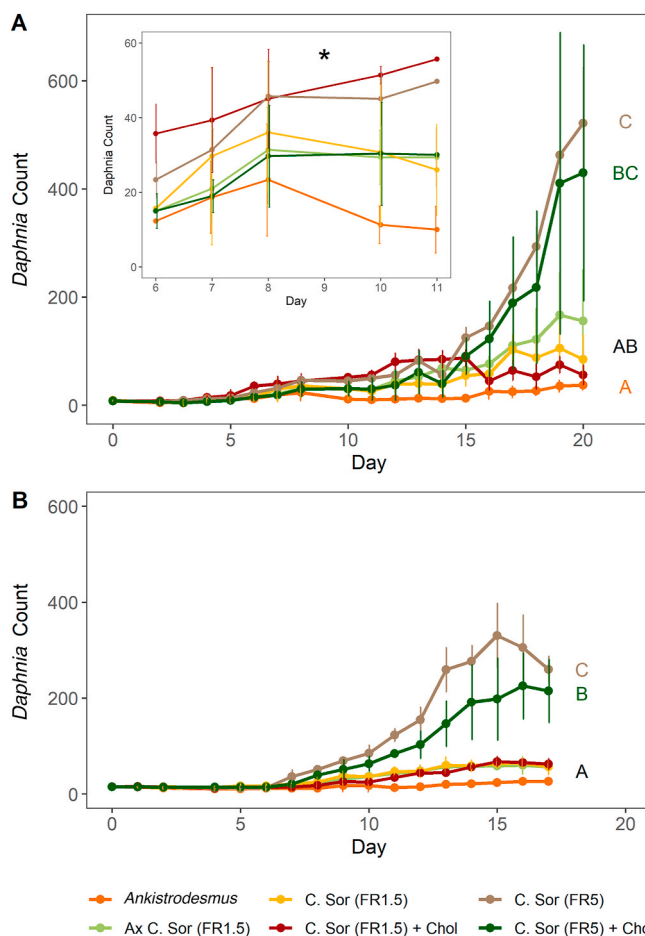


Fig. 1. Population growth of *Daphnia* varies by feeding rate. (A) Experiment 1 *Daphnia* were fed for 19 days using *Chlorella sorokiniana* (C. Sor) grown on low-strength anaerobic digestate. The use of axenic *C. sorokiniana* (Ax C. Sor), a low feeding rate of 1.5 mg C/L (FR1.5), a high feeding rate of 5 mg C/L (FR5), and cholesterol (Chol) supplementation were tested. Inset of Days 6–11 show impact of heat shock (*) on Day 9. (B) Experiment 2 *Daphnia* were grown under the same treatments as experiment 1 except that *C. sorokiniana* feed algae were grown on high-strength anaerobic digestate. Organism counts are from a 250 ml culture volume. Error bars are \pm SD; $n = 3$. Statistical significance was tested using repeated measures ANOVA with random factor for bottles followed by a Tukey HSD post hoc test ($p < 0.05$).

conditions. This reduced *Daphnia* populations in all treatments fed 1.5 mg C/L, especially those growing on *Ankistrodesmus*, while slowing the growth rate of *Daphnia* cultures fed 5 mg C/L (Fig. 1 inset). However, all cultures were able to recover from this shock event and continue growing.

The dry weights of the *Daphnia* populations taken at the end of the experiment showed significant differences in weight between the high and low feed conditions, regardless of feed type ($p < 0.001$, Fig. 2). The high feed rate resulted in 2.2–4.7 times higher final biomass than the corresponding low feed rate. These results also confirmed findings from the rough *Daphnia* counts that digestate-grown *C. sorokiniana* was not harmful to *Daphnia* biomass production when compared to the established *Daphnia* feed, *Ankistrodesmus* sp. Unlike the daily counts, which had more room for error but also finer time-course resolution of population size, the final dry weight showed no significant difference between treatments maintained at the same feed concentrations, regardless of whether the *Daphnia* were fed *C. sorokiniana*, *Ankistrodesmus* sp. or supplemented with cholesterol. From the similarity in *Daphnia* dry weight obtained from the two experiments it appeared that the strength of the anaerobic digestate used for algae cultivation did not

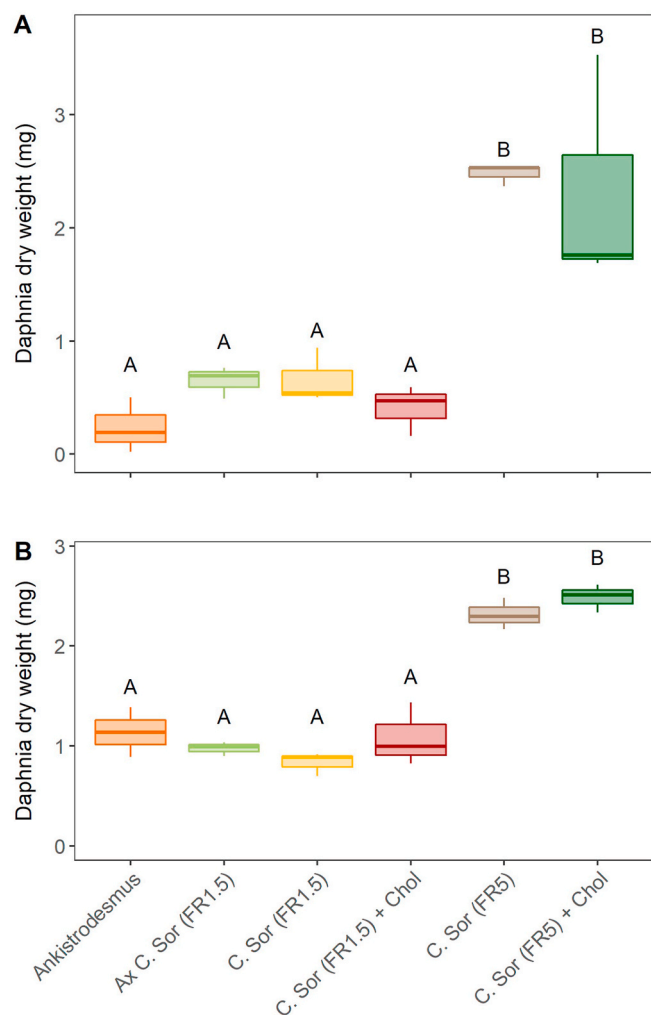


Fig. 2. Dry weight of *Daphnia* varies by feeding rate. (A) Experiment 1 *Daphnia* were fed for 19 days using *Chlorella sorokiniana* (C. Sor) grown on low-strength anaerobic digestate. The use of axenic *C. sorokiniana* (Ax C. Sor), a low feeding rate of 1.5 mg C/L (FR1.5), a high feeding rate of 5 mg C/L (FR5), and cholesterol (Chol) supplementation were tested. (B) Experiment 2 *Daphnia* were grown under the same treatments as experiment 1 except that *C. sorokiniana* feed algae were grown on high-strength anaerobic digestate. Harvested dry weight was from a 250 ml culture volume. Error bars are \pm SD; $n = 3$. Statistical significance was tested using one-way ANOVA followed by a Tukey HSD post hoc test ($p < 0.05$).

impact *Daphnia* population growth. This analysis also showed that the harvested *Daphnia* dry matter content was 6–7%.

3.2. Fatty acid and sterol content of feed algae

Analysis of the fatty acid and sterol content in the algae feed suggested that there were notable differences in nutrient content between *Ankistrodesmus* sp. and *C. sorokiniana* (Fig. 3). *C. sorokiniana* contained nearly twice the fatty acid content per mg of dry algae compared to *Ankistrodesmus* sp., which translated to higher total PUFA concentrations and twice as much ALA supplied to *Daphnia*. Cholesterol was not found in either algae. Instead, ergosterol was detected in *C. sorokiniana* but not in *Ankistrodesmus* sp. (Fig. 3B). *Scenedesmus*, a relative of *Ankistrodesmus*, are known to produce fungisterol (Martin-Creuzburg and Merkel, 2016) and a small peak matching the expected m/z of fungisterol was detected (m/z 383.4 and retention time of 7.4 min). However, no external standard of fungisterol was purchased to confirm the identity of this peak.

The different *C. sorokiniana* cultivation methods (on high- and low-strength digestate, axenic and mixed with bacteria) resulted in very similar fatty acid contents. There was no discernible difference in total fatty acid, PUFA and ALA content among treatments of *C. sorokiniana* (Fig. 3, $p > 0.05$). However, *C. sorokiniana* cultivated on high strength digestate contained a little more than half the ergosterol of *C. sorokiniana* cultivated on low strength digestate (Fig. 3B, $p < 0.001$).

3.3. Trophic transfer

The feed conversion ratio was calculated as the dry weight of algae fed throughout the experiment to the wet weight of *Daphnia* harvested at the end of the experiment. Lower values indicate more efficient feed conversion. Overall, the feed conversion ratio of treatments ranged between 0.19 and 0.31 in the second experiment (Fig. 4). Feed conversion ratios were not significantly different among treatment groups, including between the high and low feed rates (Fig. 4, $p > 0.05$).

The relative consistency in trophic transfer between low and high feed was demonstrated again in a mass balance model developed to trace the nitrogen and carbon through the experimental system. This trophic transfer model was based on data from the second experiment which used the high strength digestate for algae cultivation. Algal additions into the system contributed 100% of the input carbon, assuming minimal algal growth within the *Daphnia* culture. The model assumes that *Daphnia* can only assimilate nitrogen and carbon present in the algal-bacterial biomass. In both the high and low feed models, between a quarter and a third of the algal carbon ended up in the *Daphnia*, about five percent remained in algae, and the vast majority, 67–70%, either entered the aqueous phase or left the system, presumably as CO_2 (Fig. 5). Most of the nitrogen input (>60%) came from the lake water and remained in the water as ions. Of the nitrogen entering in the algal biomass, the high feed rate led to 34% nitrogen assimilation into *Daphnia*, whereas the low feed rate led to 29% assimilation.

4. Discussion

4.1. *Daphnia* growth and nutrition

C. sorokiniana grown on pretreated anaerobic digestate was not found to be harmful to *Daphnia* when provided as a feed. In fact, *Daphnia* population growth using this alga exceeded the growth in populations fed *Ankistrodesmus* sp., despite the latter's use as a standard *Daphnia* feed (DeMott et al., 2010; Lampert, 1978; Sarnelle and Wilson, 2005). These trends were consistent regardless of the strength of the digestate used to grow the algae. Moreover, the presence of wastewater bacteria mixed into the algal feed had no significant impact on *Daphnia* growth.

More significant for *Daphnia* growth than feed type was feed concentration. *Daphnia* are especially sensitive to water quality, including high-nutrient conditions (Cowgill et al., 1986). Consequently, there were initially concerns about overfeeding *Daphnia*, which has been shown to result in population decline and mortality (Jakobsen and Johnsen, 1987; Jensen and Hessen, 2007; Martínez-Jerónimo et al., 1994; Porter et al., 1982). However, *Daphnia* populations fed the high feed concentration of 5 mg C/L grew 2.2–4.7 times more than those fed 1.5 mg C/L. These findings contrasted with previous feed studies, which identified 0.6 mg C/L as the limiting incipient level of feed concentration for somatic growth (Lampert, 1978). However, Pajk et al. (2012) cautions that changes in temperature and food quality strongly effect dietary requirements of *Daphnia*, so *Daphnia* raised on different conditions and feeds may have notable variation in dietary constraints. Additionally, many of the previous studies that identified an incipient limiting level of feed concentration for *Daphnia* measured somatic growth instead of populational growth and were conducted in the *Daphnia*'s habitat, where variables such as temperature, predation and nutrient composition of feed were not held constant (Jakobsen and Johnsen, 1987; Martínez-Jerónimo et al., 1994; Porter et al., 1982).

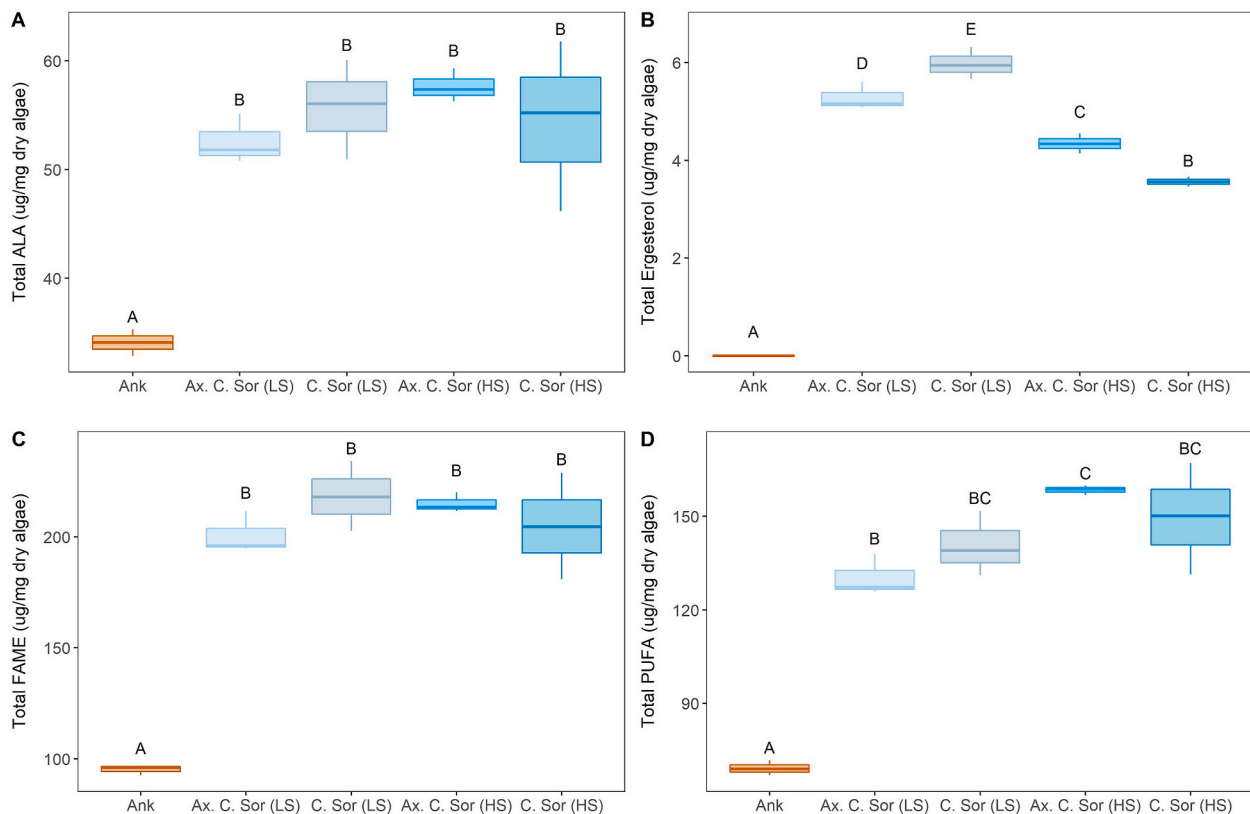


Fig. 3. Fatty acid and sterol content in algal feeds (µg/mg). Total α-linolenic acid (A), ergosterol content (B), total polyunsaturated fatty acid content (C), total fatty acid content (D). Ank = *Ankistrodesmus*, C. Sor = *Chlorella sorokiniana*, LS = low strength digestate, HS = high strength digestate, Ax = axenic algae-based feed were grown on sterile-filtered anaerobic digestate. Statistical significance was tested using one-way ANOVA followed by a Tukey HSD post hoc test, ($p < 0.05$); error bars are \pm SD, $n = 3$.

Because *Daphnia* have been used primarily as model organisms in ecological and water-quality studies, those researchers had little motivation to alter natural feeding habits or feed availability. The results from the present study suggest that *Daphnia* populations raised in a controlled setting may thrive on much higher feed concentrations than the standard feeding rate for *Daphnia* (1–1.5 mg C/L). It is even possible that they can tolerate feed concentrations even higher than 5 mg C/L, especially with feeds high in PUFAs and sterols. Moreover, the higher feeding rate appeared to help *Daphnia* better recover from a heat shock event. Accumulation of ammonium in the water would have to be managed, however.

That both experiments shared the same trends in *Daphnia* population growth was encouraging considering the combination of methodological and incidental variation that distinguished the first and second experiment. In addition to a lower-strength digestate used to cultivate the feed algae, *Daphnia* cultures in the first experiment experienced heat-shock following a building-wide air-conditioning malfunction. Despite high variability within treatments in the first experiment, the maintenance of trends of population growth between the treatments increases confidence that *Daphnia* can survive on wastewater-grown algae and that the higher feed concentrations increased population growth and perhaps its resilience to shock events as well.

The nutritional composition and abundance of limiting nutrients such as omega3 fatty acids and sterols may explain some of the differences in population growth between treatments that varied only in feed type or in feed concentration. Compositional analysis of the algal feeds showed that *C. sorokiniana* contained twice the total fatty acids as *Ankistrodesmus*, and twice the concentration of ALA. The greater populations observed in *Daphnia* fed digestate-grown *C. sorokiniana* compared to *Ankistrodesmus* sp. were consistent with other studies that

have observed enhanced *Daphnia* growth on algae and cyanobacteria supplemented with EPA (Windisch and Fink, 2018). This difference in fatty acid and sterol content between algal species can be explained in part by natural variation among algal species, but the high levels of fatty acids and sterol in *C. sorokiniana* may also be a result of growing the algae in nutrient-rich digestate. *C. sorokiniana* (and many other green algae) are known to produce predominantly polar lipids that are rich in PUFAs including ALA, when cultured under high-nutrient conditions (Higgins et al., 2015; Negi et al., 2016). The results also showed that the strength of the digestate altered the production of ergosterol in *C. sorokiniana*, with higher strength digestate suppressing production.

It was initially surprising that cholesterol supplementation had no benefit and even seemed to inhibit *Daphnia* growth slightly. Increased dietary sterols in *Daphnia magna* and *D. galeata* diets have been linked to an increase in somatic and population growth, although the degree of change is minimal when the basal feed is already high in sterols (Martin-Creuzburg et al., 2005). It was therefore hypothesized that sterols were not limiting for growth because the concentration of ergosterol in the *Chlorella* was sufficient. Additionally, the cholesterol was not added to the feed but to the water following sonication, so it is possible that the method of cholesterol supplementation did not translate to higher ingestion of cholesterol by *Daphnia*. It is also possible that the slight inhibition of population growth in cholesterol-supplemented treatments was due to the presence of impurities in the cholesterol supplement. In LCMS of the cholesterol supplement, an unidentified peak was present in the sample suggesting the presence of an impurity. Nevertheless, sterol supplementation is unlikely to provide benefits so long as the wastewater-grown algae have sufficient sterol content, as was the case in this study.

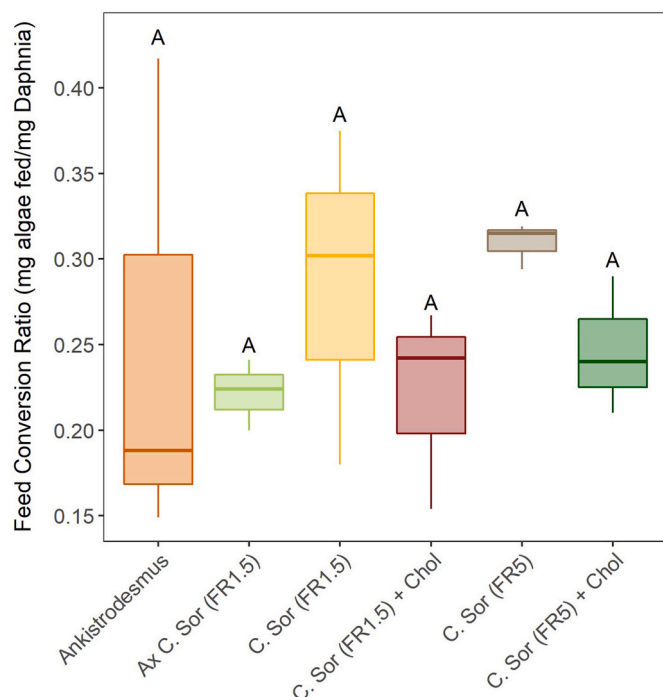


Fig. 4. Feed conversion rate in experiment 2 where *Daphnia* were fed for 17 days using *Chlorella sorokiniana* (C. Sor) grown on high-strength anaerobic digestate. The use of axenic *C. sorokiniana* (Ax C. Sor), a low feeding rate of 1.5 mg C/L (FR1.5), a high feeding rate of 5 mg C/L (FR5), and cholesterol (Chol) supplementation were tested. Error bars are \pm SD; $n = 3$. Statistical significance was tested using one-way ANOVA followed by a Tukey HSD post hoc test ($p < 0.05$).

4.2. Practical implications

The results of this study reinforce the point that *Daphnia* are highly efficient converters of algae-based feed into body mass. The observed FCR of <0.31 was substantially lower than established livestock production modes. Note that a low FCR indicates a highly efficient system. Finfish are among the most efficient animals with FCR typically ranging

from 1 to 2.5 depending on feed quality and environmental conditions (Fry et al., 2018). Part of the reason FCR appears so low in this study is the high water content of *Daphnia* (~93%). Assuming dry algae is converted to wet *Daphnia* at an FCR of 0.25 and dry *Daphnia* is converted to fish biomass at an FCR of 1, then the overall FCR of the entire process (dry algae to wet fish biomass) is just under 4. This is similar to the conversion efficiency of pigs (2.7–5) but lower than that of chickens (1.7–2) (Fry et al., 2018). More meaningful than FCR alone is the carbon and nitrogen transfer from algae to *Daphnia*. Without any system optimization or *Daphnia* improvements through breeding, 25–28% of carbon and 29–34% of nitrogen from the algae was assimilated by *Daphnia*. Because nitrogen is often used to estimate crude protein content of feed materials, it was inferred that the protein conversion efficiency was also 29–34%. This compares favorably to animal protein production with values typically falling in the range of 15–20% (Fry et al., 2018), but again, additional losses will occur when zooplankton are consumed by fish. When compared to aquaculture or livestock production, it is still important to consider that all of the nutritional inputs to this system were derived from waste whereas traditional animal production utilizes synthetic fertilizers to produce plant-based feed.

5. Conclusions

This study established the technical feasibility of growing *Daphnia* zooplankton on digestate-grown *C. sorokiniana*, with growth greater than or equal to a standard diet of *Ankistrodesmus* sp. The digestate-grown *C. sorokiniana* was rich in α -linolenic acid and sterols that are often limiting nutrients in *Daphnia* diets. The higher feeding rate (5 mg C/L) led to 2.2–4.7-fold faster *Daphnia* population growth than the low feeding rate (1.5 mg C/L). The presence of wastewater bacteria mixed into the algae feed did not harm *Daphnia* growth. Finally, *Daphnia* had high carbon (25–28%) and nitrogen (29–34%) conversion efficiency when fed digestate-grown algae despite no system optimization. Future studies should investigate whether nutrient transfer from wastewater to *Daphnia* is viable on a larger scale, and whether feed and environmental conditions can be optimized to promote trophic transfer efficiency from algae to *Daphnia*. Data from this study will be used in subsequent technoeconomic and life cycle assessments.

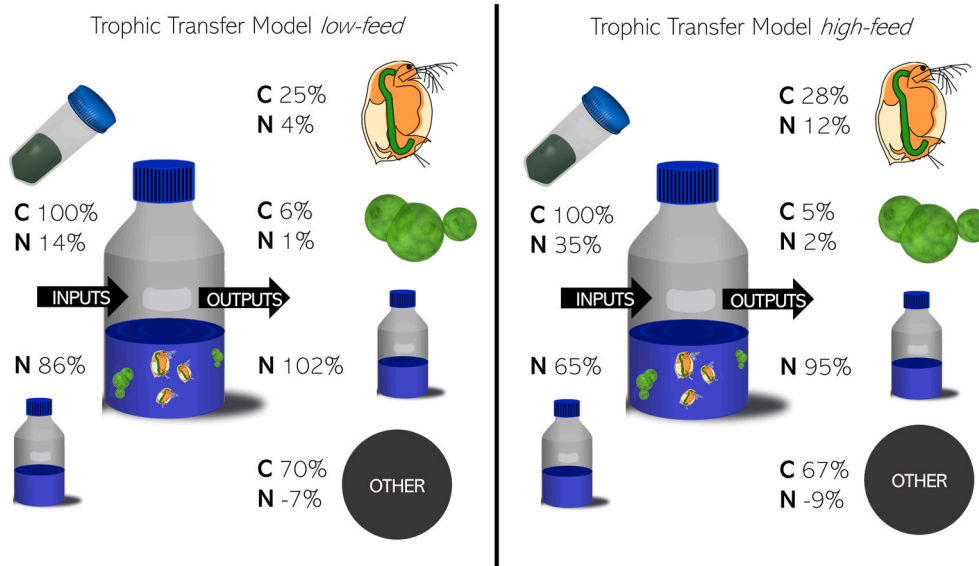


Fig. 5. Mass balance of C and N using data from experiment 2 (*C. sorokiniana* grown on high-strength anaerobic digestate), for both low feed (left panel) and high feed (right panel) concentrations for *Daphnia*. The model assumes only C and N present in algal-bacterial biomass can be assimilated by *Daphnia*. Negative values are the result of imperfect mass closure.

CRediT authorship contribution statement

Miriam Hyman: Data curation, Formal analysis, Investigation, Methodology, Writing – original draft. **Qichen Wang:** Investigation, Methodology, Supervision, Writing – review & editing. **Alan E. Wilson:** Funding acquisition, Methodology, Resources, Writing – review & editing. **Sushil Adhikari:** Methodology, Resources. **Brendan T. Higgins:** Funding acquisition, Methodology, Supervision, Writing – review & editing.

Declaration of competing interest

The authors declare that they have no known competing financial interests or personal relationships that could have appeared to influence the work reported in this paper.

Acknowledgments

This work was supported by the USDA National Institute of Food and Agriculture and the Alabama Agricultural Experiment Station [Hatch Project ALA0HIGGINS] and the National Institute of Food and Agriculture [competitive grant number 2020-67021-31145]. M. Hyman received support from the National Science Foundation, Research Experience for Undergraduates [grant number 1658694]. The Auburn University Offices of the Provost, the Vice President for Research, and the Samuel Ginn College of Engineering also provided financial support to Q. Wang. No funding source participated in the research design or preparation of this manuscript.

Appendix A. Supplementary data

Supplementary data related to this article can be found at <https://doi.org/10.1016/j.jclepro.2021.127501>.

References

- Becker, C., Boersma, M., 2005. Differential effects of phosphorus and fatty acids on *Daphnia magna* growth and reproduction. *Limnol. Oceanogr.* 50 (1), 388–397.
- Bohutskyi, P., Kligerman, D.C., Byers, N., Nasr, L.K., Cua, C., Chow, S., Su, C., Tang, Y., Betenbaugh, M.J., Bouwer, E.J., 2016. Effects of inoculum size, light intensity, and dose of anaerobic digestion centrate on growth and productivity of *Chlorella* and *Scenedesmus* microalgae and their poly-culture in primary and secondary wastewater. *Algal Research* 19, 278–290.
- Chaump, K., Preisser, M., Shanmugam, S.R., Prasad, R., Adhikari, S., Higgins, B.T., 2018. Leaching and anaerobic digestion of poultry litter for biogas production and nutrient transformation. *Journal of Waste Management* 84, 413–422.
- Chislock, M.F., Sarnelle, O., Jernigan, L.M., Wilson, A.E., 2013a. Do high concentrations of microcystin prevent *Daphnia* control of phytoplankton? *Water Res.* 47 (6), 1961–1970.
- Chislock, M.F., Sarnelle, O., Olsen Brianna, K., Doster, E., Wilson Alan, E., 2013b. Large effects of consumer offense on ecosystem structure and function. *Ecology* 94 (11), 2375–2380.
- Cho, S., Lee, N., Park, S., Yu, J., Luong, T.T., Oh, Y.-K., Lee, T., 2013. Microalgae cultivation for bioenergy production using wastewaters from a municipal WWTP as nutritional sources. *Bioresour. Technol.* 131, 515–520.
- Cowgill, U.M., Emmel, H.W., Hopkins, D.L., Applegate, S.L., Takahashi, I.T., 1986. The influence of water on reproductive success and chemical composition of laboratory reared populations of *Daphnia magna*. *Water Res.* 20 (3), 317–323.
- Davis, R., Aden, A., Pienkos, P.T., 2011. Techno-economic analysis of autotrophic microalgae for fuel production. *Appl. Energy* 88 (10), 3524–3531.
- de-Bashan, L.E., Trejo, A., Huss, V.A.R., Hernandez, J.-P., Bashan, Y., 2008. *Chlorella sorokiniana* UTEX 2805, a heat and intense, sunlight-tolerant microalga with potential for removing ammonium from wastewater. *Bioresour. Technol.* 99 (11), 4980–4989.
- DeMott, W.R., McKinney, E.N., Tessier, A.J., 2010. Ontogeny of digestion in *Daphnia*: implications for the effectiveness of algal defenses. *Ecology* 91 (2), 540–548.
- Elert, E.V., Martin-Creuzburg, D., Le Coz, J.R., 2003. Absence of sterols constraints carbon transfer between cyanobacteria and a freshwater herbivore (*Daphnia galeata*). *Proc. R. Soc. Lond. Ser. B Biol. Sci.* 270 (1520), 1209–1214.
- EPA, 2013. In: Water, O.O. (Ed.), *Aquatic Life Ambient Water Quality Criteria for Ammonia - Freshwater* (2013). US Environmental Protection Agency, Washington, DC.
- Franchino, M., Tigini, V., Varese, G.C., Mussat Sartor, R., Bona, F., 2016. Microalgae treatment removes nutrients and reduces ecotoxicity of diluted piggy digestate. *Sci. Total Environ.* 569–570, 40–45.
- Fry, J.P., Mailloux, N.A., Love, D.C., Milli, M.C., Cao, L., 2018. Feed conversion efficiency in aquaculture: do we measure it correctly? *Environ. Res. Lett.* 13 (2), 024017.
- Fuldauer, L.L., Parker, B.M., Yaman, R., Borrión, A., 2018. Managing anaerobic digestate from food waste in the urban environment: Evaluating the feasibility from an interdisciplinary perspective. *J. Clean. Prod.* 185, 929–940.
- Ger, K.A., Urrutia-Cordero, P., Frost, P.C., Hansson, L.-A., Sarnelle, O., Wilson, A.E., Lüring, M., 2016. The interaction between cyanobacteria and zooplankton in a more eutrophic world. *Harmful Algae* 54, 128–144.
- Glibert, P.M., 2017. Eutrophication, harmful algae and biodiversity — challenging paradigms in a world of complex nutrient changes. *Mar. Pollut. Bull.* 124 (2), 591–606.
- Hassett, R.P., 2004. Supplementation of a diatom diet with cholesterol can enhance copepod egg-production rates. *Limnol. Oceanogr.* 49 (2), 488–494.
- Heredia Falconi, J.H., Soares, J., Rocha, D.N., Gomes Marçal Vieira Vaz, M., Martins, M. A., 2021. Strain screening and ozone pretreatment for algae farming in wastewaters from sugarcane ethanol biorefinery. *J. Clean. Prod.* 282, 124522.
- Herrera, A., D'Imporzano, G., Acien Fernandez, F.G., Adani, F., 2021. Sustainable production of microalgae in raceways: nutrients and water management as key factors influencing environmental impacts. *J. Clean. Prod.* 287, 125005.
- Higgins, B., Labavitch, J.M., VanderGheynst, J.S., 2015. Co-culturing *Chlorella minutissima* with *Escherichia coli* can increase neutral lipid production and improve biodiesel quality. *Biotechnol. Bioeng.* 112 (9), 1801–1809.
- Higgins, B., Thornton-Dunwoody, A., Labavitch, J.M., VanderGheynst, J.S., 2014. Microplate assay for quantitation of neutral lipids in extracts from microalgae. *Anal. Biochem.* 465, 81–89.
- Jakobsen, P.J., Johnsen, G.H., 1987. Behavioural response of the water flea *Daphnia pulex* to a gradient in food concentration. *Anim. Behav.* 35 (6), 1891–1895.
- Jensen, T.C., Hessen, D.O., 2007. Does excess dietary carbon affect respiration of *Daphnia*? *Oecologia* 152 (2), 191–200.
- Koch, U., Martin-Creuzburg, D., Grossart, H.-P., Straile, D., 2012. Differences in the amino acid content of four green algae and their impact on the reproductive mode of *Daphnia pulex*. *Fundamental and Applied Limnology* 181 (4), 327–336.
- Lampert, W., 1978. A field study on the dependence of the fecundity of *Daphnia spec.* on food concentration. *Oecologia* 36 (3), 363–369.
- Mallin, M.A., Cahoon, L.B., 2003. Industrialized animal production—a major source of nutrient and microbial pollution to aquatic ecosystems. *Popul. Environ.* 24 (5), 369–385.
- Martin-Creuzburg, D., Merkel, P., 2016. Sterols of freshwater microalgae: potential implications for zooplankton nutrition. *J. Plankton Res.* 38 (4), 865–877.
- Martin-Creuzburg, D., von Elert, E., 2009. Good food versus bad food: the role of sterols and polyunsaturated fatty acids in determining growth and reproduction of *Daphnia magna*. *Aquat. Ecol.* 43 (4), 943–950.
- Martin-Creuzburg, D., Wacker, A., von Elert, E., 2005. Life history consequences of sterol availability in the aquatic keystone species *Daphnia*. *Oecologia* 144 (3), 362–372.
- Martínez-Jerónimo, F., Villaseñor, R., Ríos, G., Espinosa, F., 1994. Effect of food type and concentration on the survival, longevity, and reproduction of *Daphnia magna*. *Hydrobiologia* 287 (2), 207–214.
- Müller-Navarra, D.C., Brett, M.T., Park, S., Chandra, S., Ballantyne, A.P., Zorita, E., Goldman, C.R., 2004. Unsaturated fatty acid content in seston and trophic-dynamic coupling in lakes. *Nature* 427 (6969), 69–72.
- Nagy, K., Jakab, A., Pollreis, F., Bongiorno, D., Ceraulo, L., Averna, M.R., Noto, D., Vékey, K., 2006. Analysis of sterols by high-performance liquid chromatography/mass spectrometry combined with chemometrics. *Rapid Commun. Mass Spectrom.* 20 (16), 2433–2440.
- Negi, S., Barry, A.N., Friedland, N., Sudasinghe, N., Subramanian, S., Pieris, S., Holguin, F.O., Dungan, B., Schaub, T., Sayre, R., 2016. Impact of nitrogen limitation on biomass, photosynthesis, and lipid accumulation in *Chlorella sorokiniana*. *J. Appl. Phycol.* 28 (2), 803–812.
- Nikunen, E., Miettinen, V., 1985. *Daphnia magna* as an indicator of the acute toxicity of waste waters. *Bull. Environ. Contam. Toxicol.* 35 (1), 368–374.
- Pajk, F., von Elert, E., Fink, P., 2012. Interaction of changes in food quality and temperature reveals maternal effects on fitness parameters of a keystone aquatic herbivore. *Limnol. Oceanogr.* 57 (1), 281–292.
- Passero, M., Cragin, B., Coats, E.R., McDonald, A.G., Feris, K., 2015. Dairy wastewaters for algae cultivation, polyhydroxyalkanoate reactor effluent versus anaerobic digester effluent. *BioEnergy Research* 8 (4), 1647–1660.
- Pauw, N.D., Laureys, P., Morales, J., 1981. Mass cultivation of *Daphnia magna* Straus on ricebran. *Aquaculture* 25 (2), 141–152.
- Porter, K.G., Gerritsen, J., Orcutt Jr., J.D., 1982. The effect of food concentration on swimming patterns, feeding behavior, ingestion, assimilation, and respiration by *Daphnia*. *Limnol. Oceanogr.* 27 (5), 935–949.
- Quinn, J.C., Davis, R., 2015. The potentials and challenges of algae based biofuels: a review of the techno-economic, life cycle, and resource assessment modeling. *Bioresour. Technol.* 184, 444–452.
- Salama, E.-S., Kurade, M.B., Abou-Shanab, R.A.I., El-Dalatony, M.M., Yang, I.-S., Min, B., Jeon, B.-H., 2017. Recent progress in microalgal biomass production coupled with wastewater treatment for biofuel generation. *Renew. Sustain. Energy Rev.* 79, 1189–1211.
- Sarnelle, O., Wilson, A.E., 2005. Local adaptation of *Daphnia pulicaria* to toxic cyanobacteria. *Limnol. Oceanogr.* 50 (5), 1565–1570.
- Taipale, S.J., Brett, M.T., Hahn, M.W., Martin-Creuzburg, D., Yeung, S., Hiltunen, M., Strandberg, U., Kankaala, P., 2014. Differing *Daphnia magna* assimilation efficiencies for terrestrial, bacterial, and algal carbon and fatty acids. *Ecology* 95 (2), 563–576.
- Tillmanns, A.R., Wilson, A.E., Pick, F.R., Sarnelle, O., 2008. Meta-analysis of cyanobacterial effects on zooplankton population growth rate: species-specific responses. *Fundamental and Applied Limnology* 171 (4), 285–295.

- von Elert, E., 2002. Determination of limiting polyunsaturated fatty acids in *Daphnia galeata* using a new method to enrich food algae with single fatty acids. *Limnol. Oceanogr.* 47 (6), 1764–1773.
- Wang, Q., Hyman, M., Higgins, B., 2021. Factors impacting the effectiveness of biological pretreatment for the alleviation of algal growth inhibition on anaerobic digestate. *Algal Research* 53, 102129.
- Wang, Q., Peng, H., Higgins, B.T., 2019a. Cultivation of green microalgae in bubble column photobioreactors and an assay for neutral lipids. *JoVE Jan 7* (143), e59106.
- Wang, Q., Prasad, R., Higgins, B.T., 2019b. Aerobic bacterial pretreatment to overcome algal growth inhibition on high-strength anaerobic digestates. *Water Res.* 162, 420–426.
- Windisch, H.S., Fink, P., 2018. The molecular basis of essential fatty acid limitation in *Daphnia magna*: a transcriptomic approach. *Mol. Ecol.* 27 (4), 871–885.
- WorldBank, 2020. Fishmeal monthly price - US dollars per metric ton. Accessed 8/31/2020. <https://www.indexmundi.com/commodities/?commodity=fish-meal&months=60>.